

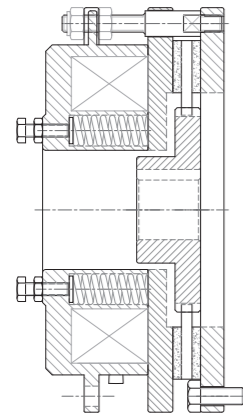
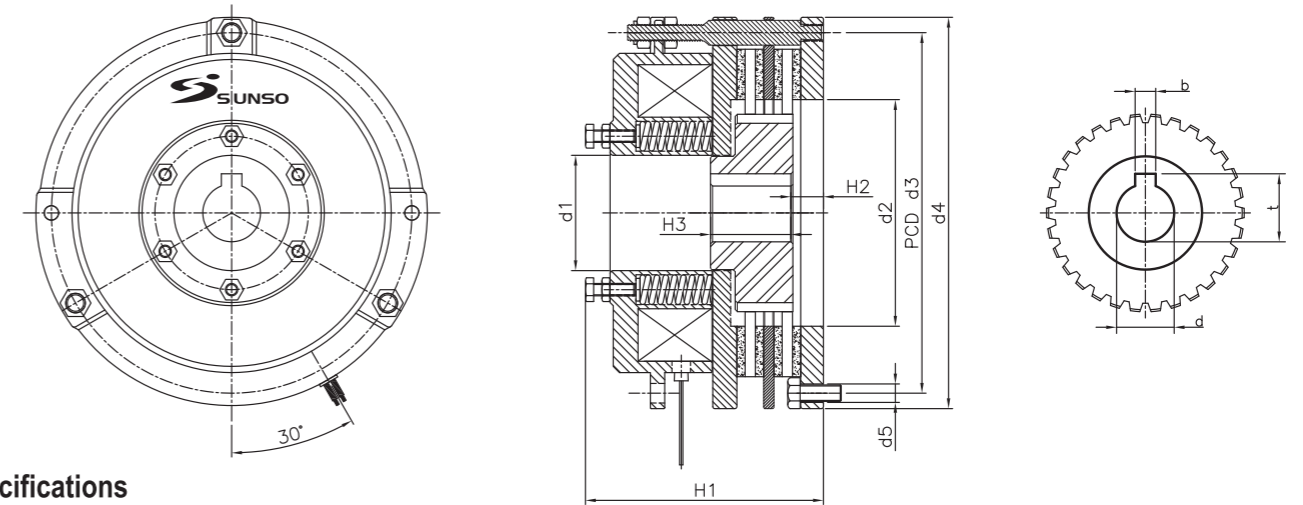
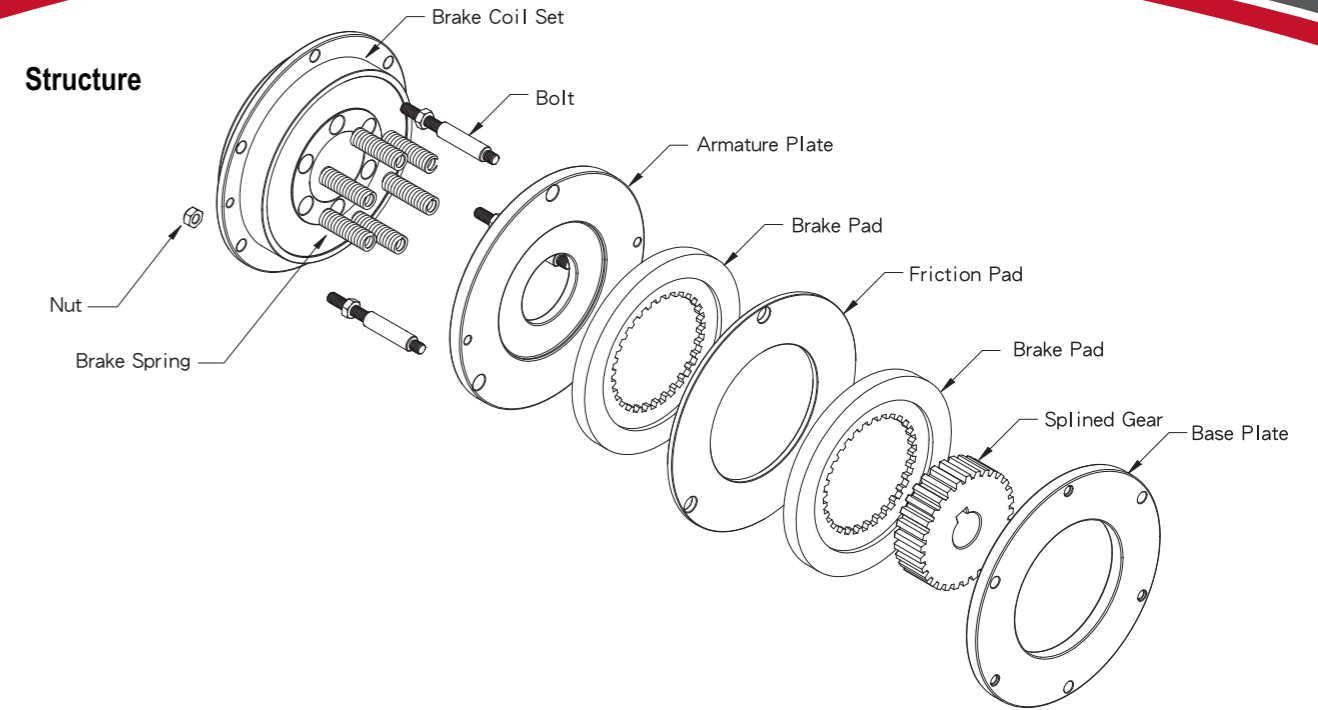
SB03 Heavy Duty Brake

Product Overview

SB03 Brake is a practical spring-applied safety brake. Its main purpose is to make the machine stop instantly. Also, the integrated design of spline gear can bear much stronger motion torque. However, the selection & application of the SB03 brake needs to fit with the operation of the designed machine requirement, so as to guarantee normal operation of the brake.

Its major features are:

- Integrated design of spline gear.
- Operation with Silent (below 70 dBA).
- Simplified Installation & Maintenance easily.
- The brake coil is covered and encircled by epoxy resin, while mechanical parts are also protected by heat-resistant coating materials so that can enhance the protection capacity of its inner structure.
- Heat radiation rapidly by means of the fan or end cap. The brake can be installed onto the motor end-cap directly. (i.e. the motor end-cap is served as the brake surface which shall be composed of steel or cast iron coupled with precisely machining and smoothly in its surface.



Brake Working Principle

The brake pad is installed onto the motor shaft through the splined gear, coupled with the flange fastened onto the motor end cap. Also, the pad is suppressed by the armature plate through the force of compressed brake springs so that the brake pad is hold between the armature plate and base plate by means of friction.

After installation, an air gap between the brake coil set and the armature plate is kept in specified value. When the power is connected to the brake coil, the force of the magnetic field is used for torque transmission. Then the armature plate is pulled in axial direction towards the brake coil set so that the brake pad is released and can be free rotation with the motor shaft.

Product Series Selection As Ordering

Model	Size Spec	Options	Brake Power	Voltage
SB03	41	A Standard	0.0.6	A DC12V
SB03	41	A Standard B Hand Release	Customerized torque (1~999N.M) is available. Please contact with Sunso Industry Ltd. 0.0.6 means the torque required is 6N.M.	A DC12V
	42			B DC24V
	51			C DC48V
	52			D DC96V
	61			E DC130V
	62			F DC190V
	71			G DC220V

Specifications

Model : SB03

Series ^{Note1}	41	51	61	71	42	52	62	72
Rated Torque (N.M)	80	180	280	470	160	340	530	880
Max. Torque (Max. N.M)	100	200	300	500	180	360	550	900
b	10	10	10	18	10	10	12	18
t	33	33	50	71	33	33	50	71
d1	56	62	85	105	56	62	85	105
d2	110	125	148	180	110	125	148	180
d3	175	198	252	305	175	198	252	305
d4	190	220	275	340	190	220	275	340
d5	3xM8	3xM10	6xM10	6xM16	3xM8	3xM10	6xM10	6xM16
H1	97	111	116	132	115	131	140	160
H2	13	14	18	16	14	16	21	16
H3	30	30	40	70	40	40	60	70
d(H6)	28/32/35	28/32/35	40/45/50	65	28/32/35	28/32/35	40/45/50	65
Weight (Kg)	8	12	27	100	10	16	34	103

Note 1 : SB03 42/52/62/72 series are equipped with two brake pads.