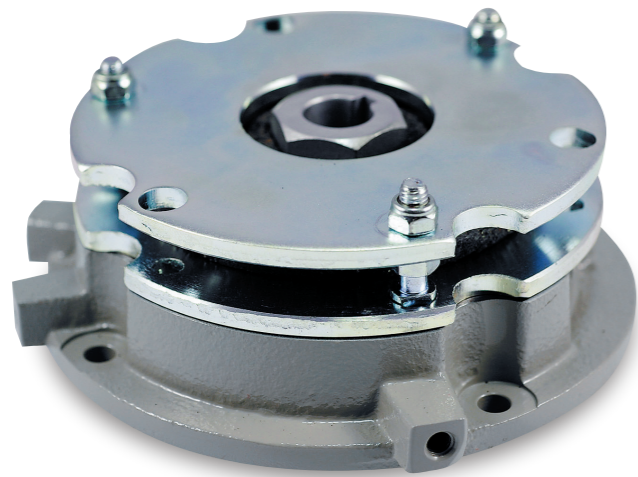


SB06 Compact Spring-Applied Brake

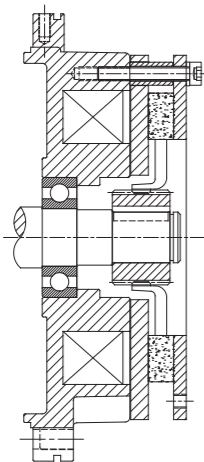


Product Overview

SB06 brake is a sort of spring-applied electromagnetic brake and can replace the end-cap of motor to shorten the installation space. The main purpose of SB06 brake is to stop the rotation of the motor shaft instantly.

Its major features are:

- Solid Structure
- Simplified Installation
- Operation with Silent
- Heat Radiation Smoothly: The impurity generated from frictions during operation is blown away the fan easily.
- High Heat-Resistance: The brake coil is covered and encircled by epoxy resin, while mechanical parts are also protected by heat-resistant coating materials.
- The customized brake can available to match the requirements of motor or special equipment.

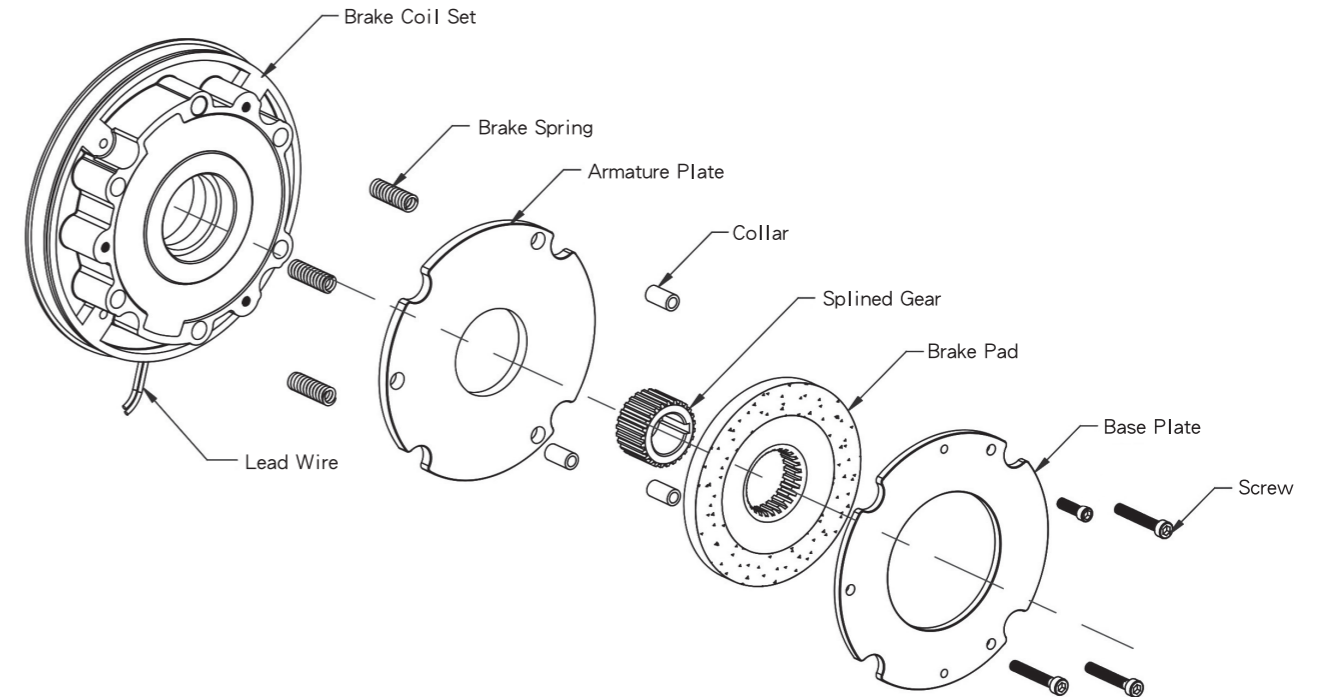


Brake Working Principle

The brake pad is installed onto the motor shaft through the splined gear, coupled with the flange fastened onto the motor end cap. Also, the pad is suppressed by the armature plate through the force of compressed brake springs so that the brake pad is hold between the armature plate and base plate by means of friction.

After installation, an air gap between the brake coil set and the armature plate is kept in specified value. When the power is connected to the brake coil, the force of the magnetic field is used for torque transmission. Then the armature plate is pulled in axial direction towards the brake coil set so that the brake pad is released and can be free rotation with the motor shaft.

Structure



Specifications

Model : SB06

Series	A	B	C	D	E	F	G	H	I
Matched Motor Frame Size	56	63	71	80	90	100	112	132	160
Motor Power (KW)	0.09	0.18	0.37	0.75	1.5	2.2	3.7	5.6	11
Rated Torque (N.M)	1	2	4	8	16	24	40	60	120
Rated Voltage (DC-V)	96	96	96	96	96	96	96	96	96
Consumption Power (W)	11	17	21	52.5	47	54	54	120	110
Brake Air Gap (mm)	Standard Value	0.2	0.2	0.25	0.25	0.35	0.35	0.35	0.35
	Limited Value	0.4	0.6	0.6	0.7	0.8	0.8	0.8	0.8
Weight (Kg)	1.2	1.8	2.9	3.2	5.8	8.3	8.6	12.3	23

Product Series Selection As Ordering

Model	Size Spec	Frame Materials	Options	Brake Power	Voltage
SB06	D 80	E Cast Iron Contracted	A Standard	C 200%	A DC12V
SB06	A 56	A Iron /Aluimum Contracted	A Standard B Hand Release	A 100% B 180% C 200% D 250%	A DC12V
	B 63				B DC24V
	C 71				C DC48V
	D 80	D Cast Iron		D DC96V	
	E 90	D Cast Iron Y-series		E DC130V	
	F 100	E Cast Iron Contracted		F DC190V	
	G 112			G DC220V	
	H 132				
	I 160				