

SB07 AC Brake

CHINA Patent No.

① ZL 2011 1 0321329. 4

② ZL 2011 2 0402476. X

TAIWAN Patent No.

① M 414515

② M 502762

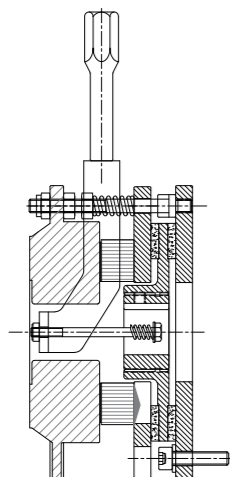


Product Overview

SUNSO SB07 Brake is a totally new design AC spring-applied brake for motor. Its main purpose is to make the machine stop with precisely & instantly by means of hooking up AC current directly so that reduces brake failed because of the rectifier malfunction. In addition, the patented design of dual AC voltages input can match more motion machines' braking power requirement & flexible applications.

Its major features are:

- AC current inputs directly without rectifier
- Dual AC voltage inputs
- Compact structure & smaller installation space
- Modular design and Installation easily
- Operation with silent
- The brake coil is covered and encircled by epoxy resin, while mechanical parts are also galvanized so that the brake can be operated in non-ventilation area.

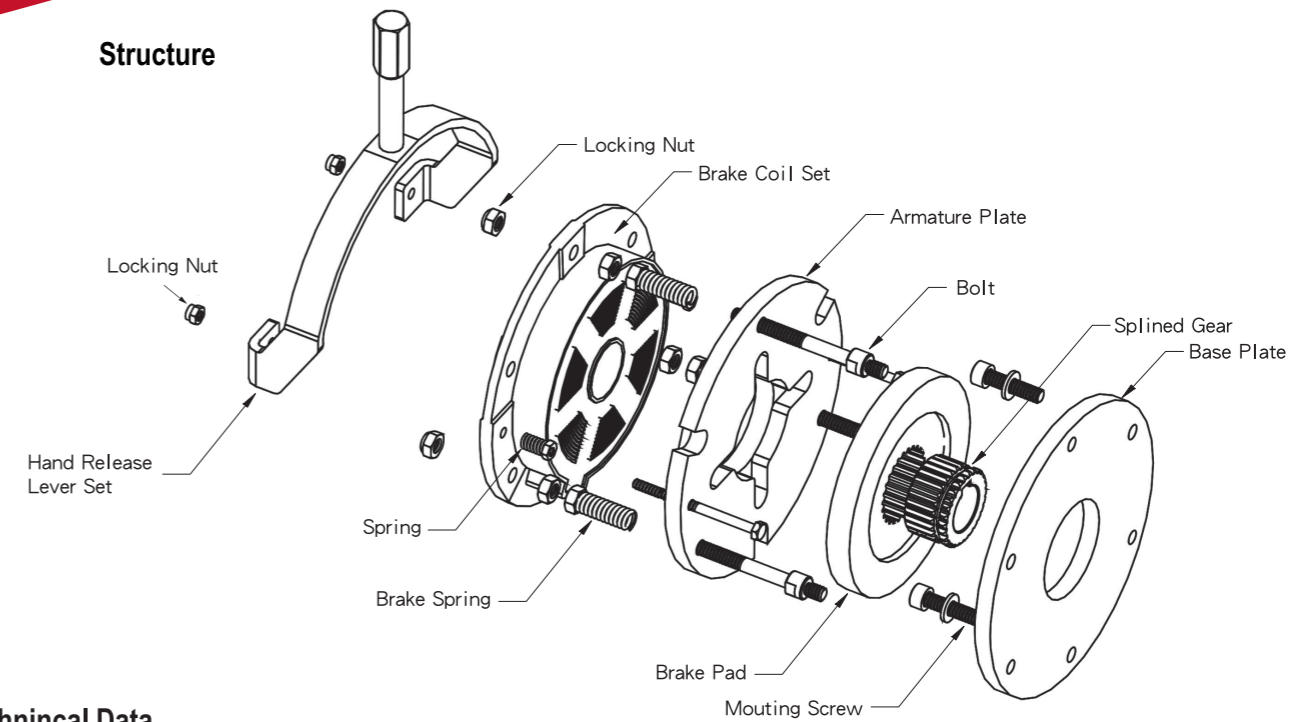


Brake Working Principle

The brake pad is installed onto the motor shaft through the splined gear, coupled with the flange fastened onto the motor end cap. Also, the pad is suppressed by the armature plate through the force of compressed brake springs so that the brake pad is hold between the armature plate and base plate by means of friction.

After installation, an air gap between the brake coil set and the armature plate is kept in specified value. When the power is connected to the brake coil, the force of the magnetic field is used for torque transmission. Then the armature plate is pulled in axial direction towards the brake coil set so that the brake pad is released and can be free rotation with the motor shaft.

Structure



Technical Data

Model : SB07

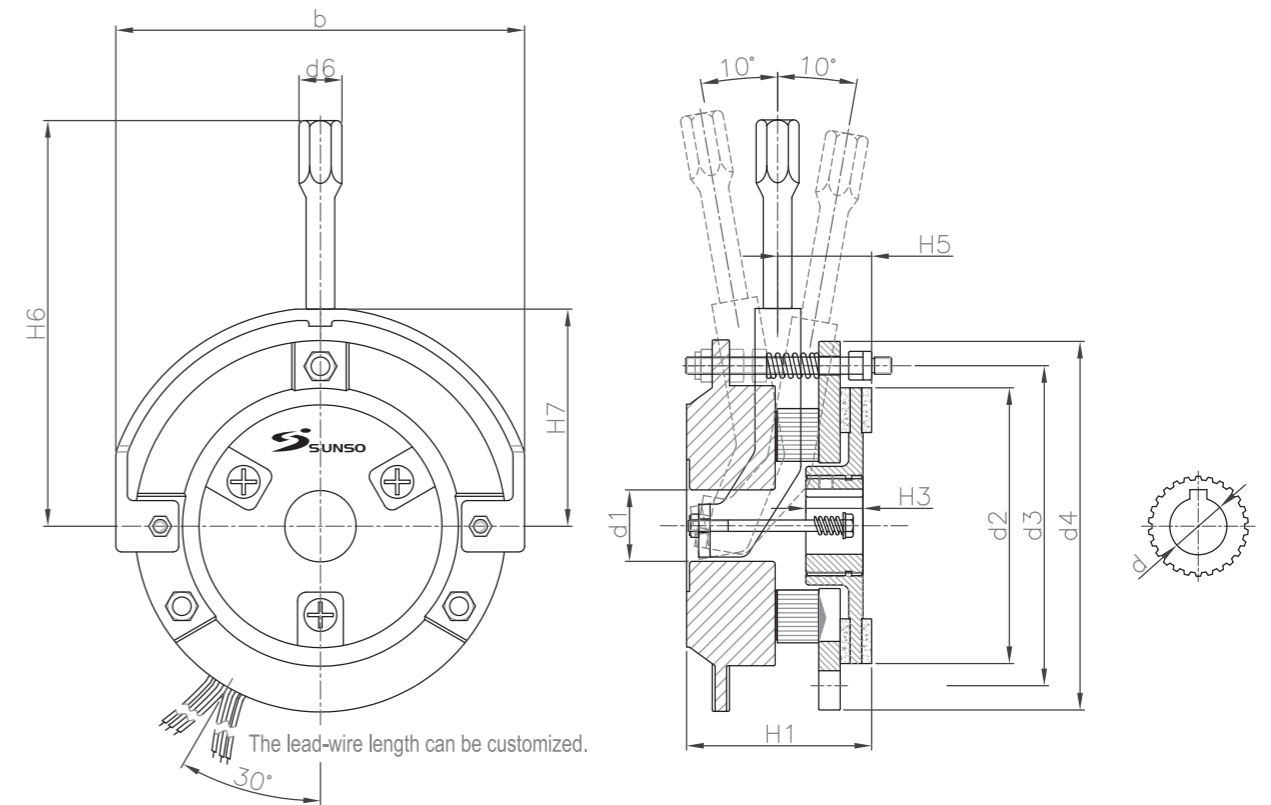
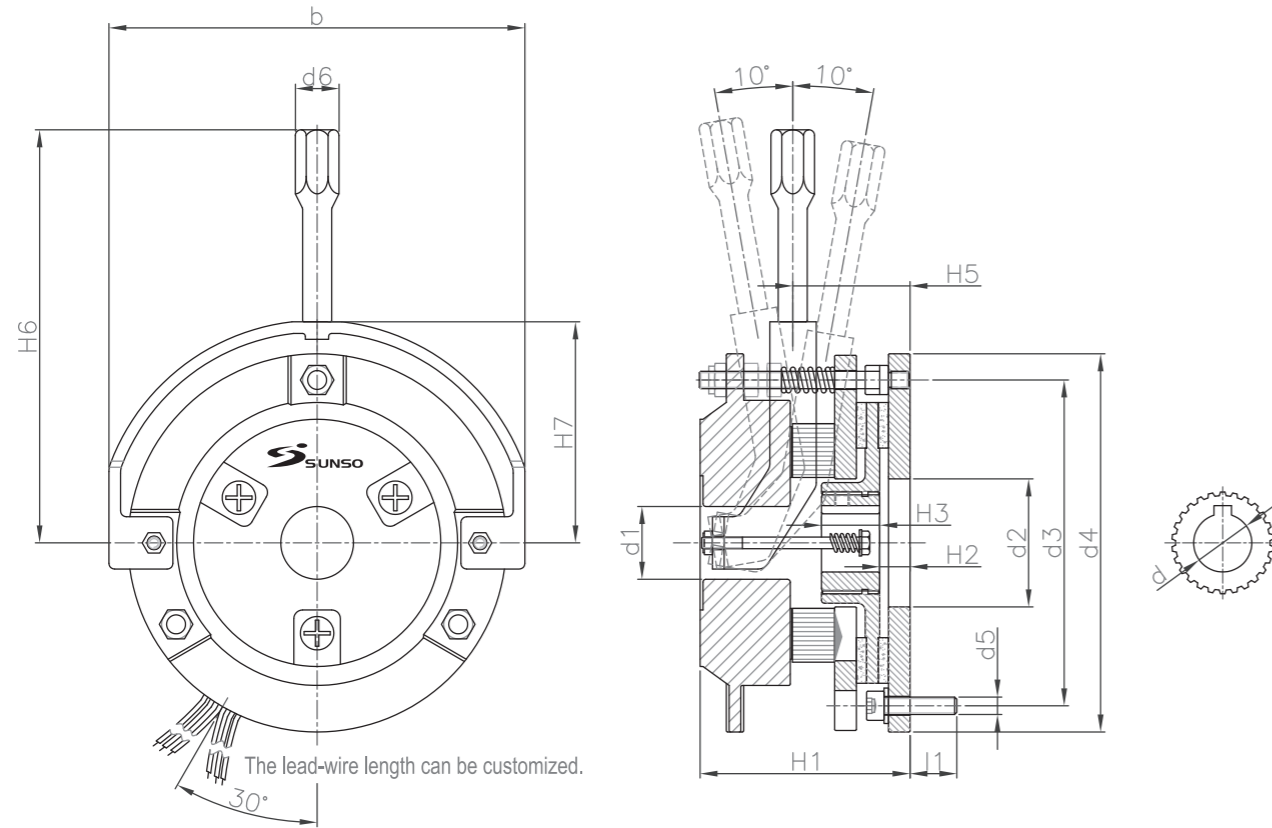
Series ^{Note1}	08	09	10	11	14	15	16	17	20	21
Static Friction Torque (N.M)	8	14	12	21	35	63	70	126	130	234
Rated Voltage (AC) ^{Note2}	AC220/380	AC220/380	AC220/380	AC220/380	AC220/380	AC220/380	AC220/380	AC220/380	AC220/380	AC220/380
Current (A)	0.11	0.11	0.35	0.35	0.6	0.6	1.2	1.2	2.2	2.2
Suction Voltage (AC)	163V	163V	188V	188V	186V	186V	185V	185V	182V	182V
Release Voltage (AC)	125V	125V	150V	150V	165V	165V	160V	160V	150V	150V
Insulation Class	F	F	F	F	F	F	F	F	F	F
Max. Rotation (RPM)	3000	3000	3000	3000	3000	3000	3000	3000	3000	3000
Moment of Inertia of Rotation Parts (J·kg·m ²)	5.9x10 ⁻⁵	11.8x10 ⁻⁵	2x10 ⁻⁴	4x10 ⁻⁴	6.3x10 ⁻⁴	12.6x10 ⁻⁴	1.5x10 ⁻³	3x10 ⁻³	1.35x10 ⁻²	2.7x10 ⁻²

Note 1 : The series of SB0709/11/15/17/21 are equipped with two brake pads.

Note 2 : Special voltage requirement, please contact with Sunso Industry Ltd.

Product Series Selection As Ordering

Model	Size Spec	Options	Brake Power	Voltage
SB07	10	A Standard	0.0.6	A AC220/380
SB07	08	A Standard B Hand Release	Customization is available, Please contact with Sunso Industry Ltd.	A AC220/380
	09			
	10			
	11			
	14			
	15			
	16			
	17			
	20			
	21			



Dimensions

Model : SB07 (Base Plate Included)

Unit: mm

Series	08	09	10	11	14	15	16	17	20	21
b	122	122	143	143	180	180	207	207	255	255
d1	25	25	25	25	35	35	40	40	50	50
d2	40	40	44	44	60	60	70	70	85	85
d3	72/90	72/90	112	112	145	145	170	170	210	210
d4	114	114	130	130	165	165	190	190	240	240
d5	3XM5	3XM5	3XM6	3XM6	3XM8	3XM8	3XM10	3XM10	3XM10	3XM10
d6	12	12	15	15	17	17	17	17	17	17
l1	8	8	12	12	14	14	16	16	16	16
H1	67	83	73	89	94	114	108	127	133	152
H2	7	15	10	11	12	10	13	13	12	15
H3	15/18	15/18	20	20	30	30	30	30	30	30
H5	44	57	38	54	47	66	53	72	111	130
H6	114	114	142	142	201	201	250	250	330	330
H7	64	64	76	76	97	97	111	111	136	136
Weight (Kg)	2.8	3.3	3.9	4.6	8.7	10	14.5	16	22.6	25
d	11/12/14/15/20	11/12/14/15/20	11/12/14/15/20	11/12/14/15/20	20/25/30/31	20/25/30/31	25/30/35/38	25/30/35/38	35/40/45/50	35/40/45/50

Dimensions

Model : SB07 (Base Plate Excluded)

Unit: mm

Series	08	09	10	11	14	15	16	17	20	21
b	122	122	143	143	180	180	207	207	255	255
d1	25	25	25	25	35	35	40	40	50	50
d2	90	90	96.5	96.5	124	124	150	150	185	185
d3	104	104	112	112	145	145	170	170	210	210
d4	114	114	130	130	165	165	190	190	240	240
d6	12	12	15	15	17	17	17	17	17	17
H1	56	72	65	81	85	104	96	113	120	138
H3	15/18	15/18	20	20	30	30	30	30	30	30
H5	33	46	31	47	38	57	42	61	98	117
H6	114	114	142	142	201	201	250	250	330	330
H7	64	64	76	76	97	97	111	111	136	136
Weight (Kg)	2.4	2.9	3.2	3.9	7.3	8.6	12.3	13.8	18.5	20.9
d	11/12/14/15/20	11/12/14/15/20	11/12/14/15/20	11/12/14/15/20	11/12/14/15/20	20/25/30/31	25/30/35/38	25/30/35/38	35/40/45/50	35/40/45/50